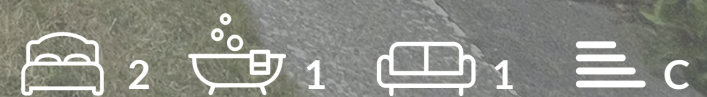




OAKFIELD



Marcia Close, Eastbourne
£1,400 Per Calendar Month



Marcia Close, Eastbourne

Tucked away in a quiet and desirable cul-de-sac, this charming two bedroom bungalow offers wonderful views and a generously sized garden, ideal for outdoor living and entertaining.

Inside, the property features a bright and airy lounge, two well-proportioned bedrooms, a functional kitchen, and a bathroom, all arranged on one easy-living level. The large garden is a real highlight, offering privacy, space, and plenty of potential.

Located close to local amenities, bus routes, this is a fantastic opportunity for those seeking a peaceful home in a sought-after location.

Please note:
An annual household income of £42,000 is required.
The tenancy will begin with a 12 month initial term





Lounge

14'1" x 12'9" (4.3 x 3.9)

Kitchen

13'1" x 7'10" (4 x 2.4)

Bathroom

8'2" x 4'11" (2.5 x 1.5)

W/C

5'2" x 2'7" (1.6 x 0.8)

Bedroom One

11'1" x 9'6" (3.4 x 2.9)

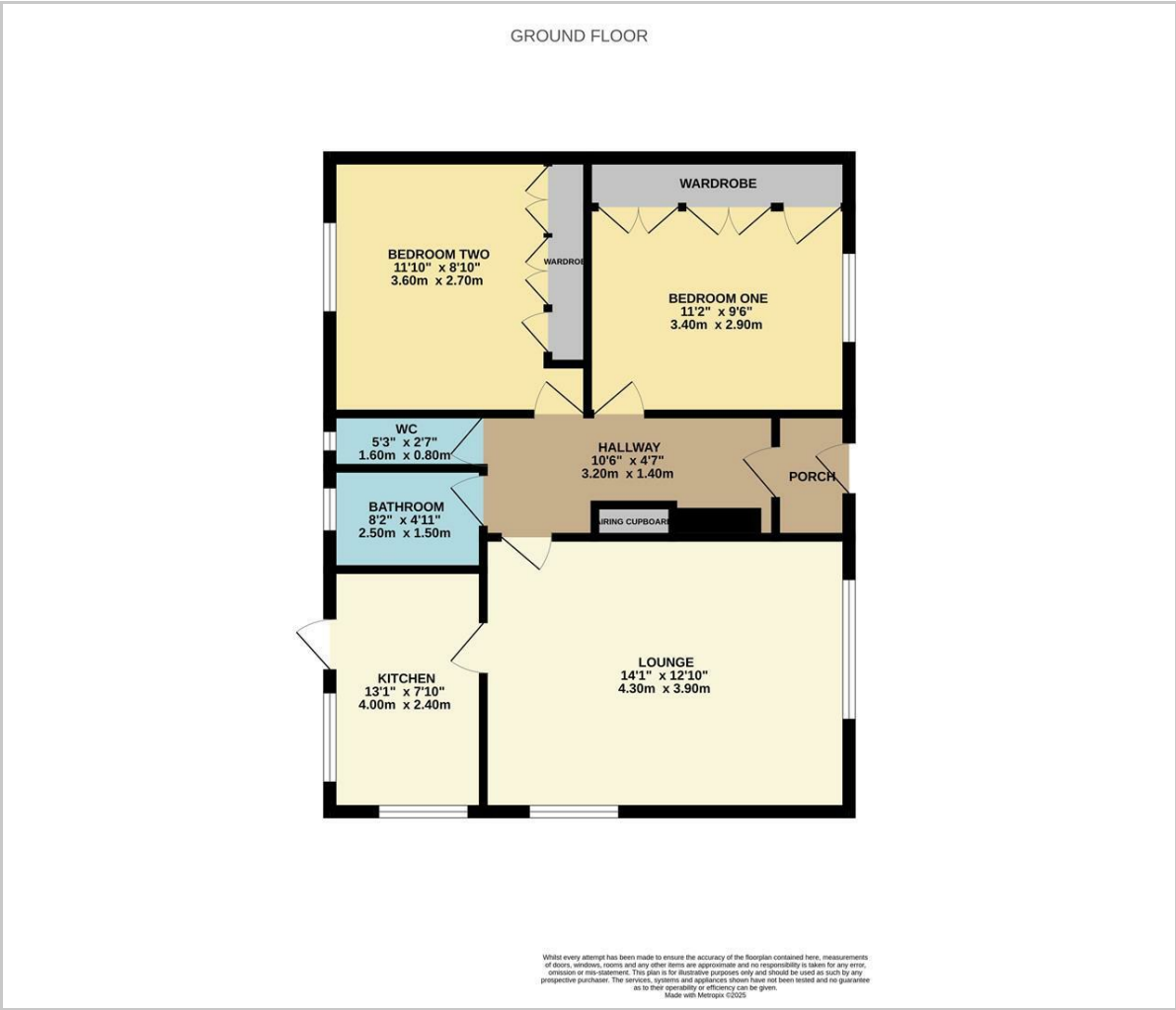
Bedroom Two

11'9" x 8'10" (3.6 x 2.7)

Council Tax Band D - £2307.76 per anum



Floor Plan



Viewing

Please contact us on 01323 405553 if you wish to arrange a viewing appointment for this property or require further information.

These particulars, whilst believed to be accurate are set out as a general outline only for guidance and do not constitute any part of an offer or contract. Intending purchasers should not rely on them as statements of representation of fact, but must satisfy themselves by inspection or otherwise as to their accuracy. No person in this firms employment has the authority to make or give any representation or warranty in respect of the property.

Area Map



Energy Efficiency Graph

